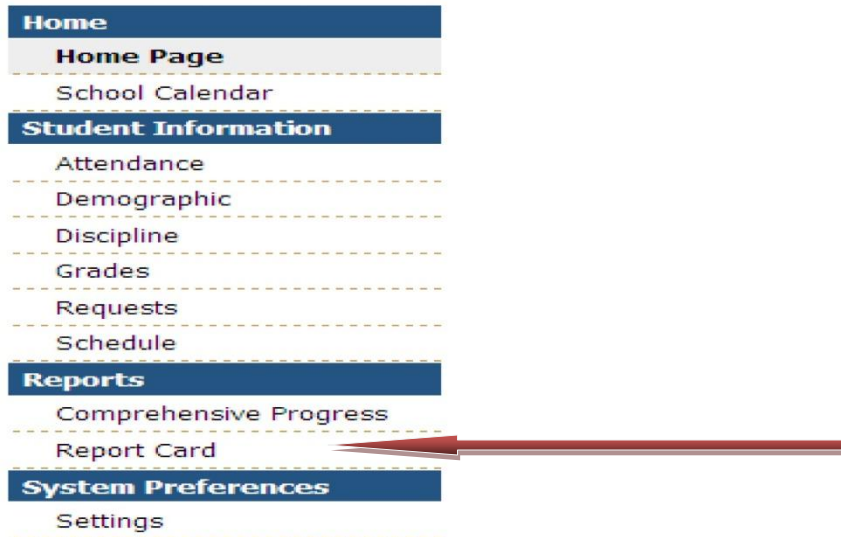


Report Card

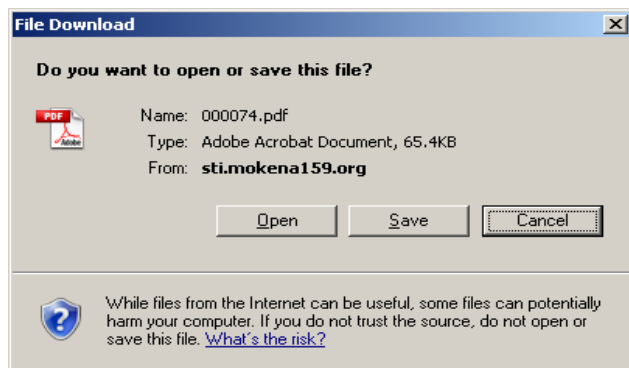
- Log into the system using your user name and password. If you are unable to log into the system, please contact the school office.
- If you have multiple students enrolled in the district, select the appropriate student in the **Student** selection box in the upper right hand corner.
- From the menu on the left of the screen, select **Report Card** under the **Reports** Section as referenced below:



Select the appropriate **Grading Period** for the report card from the drop down menu displayed and press the **View Report** button.



You may receive the following screen depending on your computer's configuration. **Your system must be able to view PDF files to display the report:**



Press the **Open** button to view the report.